



HANGER ANCHOR

Steel
Model HAS

SIZE:

1/4" thru 3/4"

FINISH:

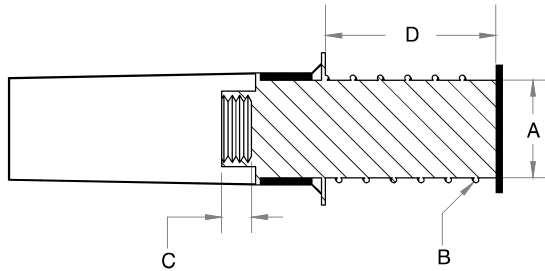
Carbon Steel and Engineered Plastic

FUNCTION:

Recommended for stationary pipe, conduit and cable tray, bracing, suspended ceilings and other light weight suspended components

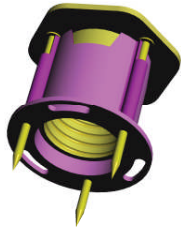
FEATURES:

- Allows for pre-installation of insert, preventing the need to drill concrete
- Color coded sleeves to easily identify rod size and locate after concrete has been poured
- Sleeves protect threads from sprayed-on fire protection, insulation and acoustical dampening



Hanger Anchor: Loads (LBS) • Weights (LBS) • Dimensions (IN)

ITEM CODE	SIZE	COLOR	WEIGHT	A	B	C	D
HAS-0025GR	1/4	GREEN	0.21	11/16	1/16	1/16	1 1/8
HAS-0037YW	3/8	YELLOW	0.23	11/16	1/16	5/8	1 1/8
HAS-0050BR	1/2	BROWN	0.26	11/16	1/16	11/16	1 1/8
HAS-0062PL	5/8	PURPLE	0.30	1	1/8	15/16	1 1/8
HAS-0075RD	3/4	RED	0.36	1	1/8	1 1/8	1 1/8



HANGER BANGER

Wood
Model HBW

SIZE:

1/4" thru 3/4"

FINISH:

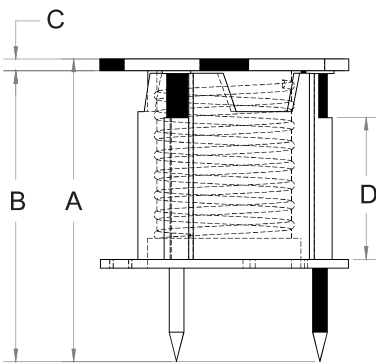
Carbon Steel and Engineered Plastic

FUNCTION:

Recommended for stationary pipe, conduit and cable tray, bracing, suspended ceilings and other light weight suspended components

FEATURES:

- Allows for pre-installation of insert, preventing the need to drill concrete
- Color coded sleeves to easily identify rod size and locate after concrete has been poured
- Sleeves protect threads from sprayed-on fire protection, insulation and acoustical dampening



Hanger Banger: Loads (LBS) • Weights (LBS) • Dimensions (IN)

ITEM CODE	SIZE	COLOR	WEIGHT	A	B	C	D
HBW-0025GR	1/4	GREEN	0.37	2 ¹³ / ₁₆	2 ¹ / ₁₆	1/8	1 ³ / ₈
HBW-0037YW	3/8	YELLOW	0.40	2 ¹³ / ₁₆	2 ¹¹ / ₁₆	1/8	1 ³ / ₈
HBW-0050BR	1/2	BROWN	0.42	2 ¹³ / ₁₆	2 ¹¹ / ₁₆	1/8	1 ³ / ₈
HBW-0062PL	5/8	PURPLE	0.65	2 ¹³ / ₁₆	2 ¹¹ / ₁₆	1/8	1 ³ / ₈
HBW-0075RD	3/4	RED	0.71	2 ¹³ / ₁₆	2 ¹¹ / ₁₆	1/8	1 ³ / ₈